

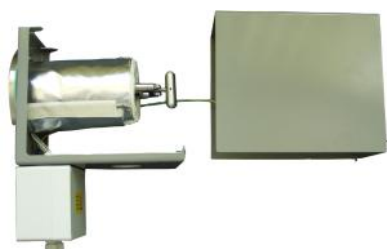
- Sampling Conditioning Systems
- Process Analytics
- System Integration
- Gas Generators
- FTIR-Analyser



conditioning systems

Configuration for JES 301

Gas sampling probe



35.00005	JES 301W	Unheated gas sampling probe, DN65/PN6
35.00208	JES 301H	Heated gas sampling probe without temperature controller, 230V 50/60 Hz, DN65/PN6
35.00210	JES 301	Heated gas sampling probe with controller and housing (180°C), 230V 50/60 Hz, DN65/PN6
35.00212	JES 301B	Heated gas sampling probe with temperature controller, housing and back purge equipment, 230V 50/60 Hz, DN65/PN6
35.00214	JES 301C	Heated gas sampling probe with temperature controller, housing (180°C) and calibration gas (raw gas side), 230V 50/06 Hz, DN65/PN6
35.00016	JES 301SH	Steam heated gas sampling probe without insulation
35.00221	JES 301Z	Heated gas sampling probe with temperature controller and housing (180°C), 230V 50/60 Hz, 2" ANSI, 150lb
35.00025	JES 301WZ	Unheated gas sampling probe, 2" ANSI, 150lb.
35.00308	JES 301HX	Heated gas sampling probe without temperature controller, 115V 50/60 Hz, DN65/PN6
35.00310	JES 301X	Heated gas sampling probe with temperature controller and housing (180°C), 115V 50/60 Hz, DN65/PN6
35.00321	JES 301ZX	Heated gas sampling probe with temperature controller and housing (180°C), 115V 50/60 Hz, 2" ANSI, 150lb.

Sampling pipe



35.00060	ER-S10	Length 1000 mm	Made of SS316Ti (1.4571), for temperatures up to 600°C
35.00061	ER-S15	Length 1500 mm	
35.00062	ER-S20	Length 2000 mm	
35.00063	ER-S25	Length 2500 mm	
35.00065	ER-S30	Length 3000 mm	
35.00050	ER-K10	Length 1000 mm	Made of Kanthal, for temperatures up to 1200°C
35.00051	ER-K15	Length 1500 mm	
35.00052	ER-K20	Length 2000 mm	
35.00070	ER-H10	Length 1000 mm	Made of SS314 (1.4841), for temperatures up to 1100°C
35.00071	ER-H15	Length 1500 mm	
35.00080	ER-T10	Length 1000 mm	Made of Teflon, for temperatures up to 140°C
35.00081	ER-T15	Length 1500 mm	
35.00082	ER-T05	Length 500 mm	

CONFIGURATION JES 301

Heated sampling pipe



35.07050	ER-EH05	Length 500 mm	Made of SS316 (1.4401), for temperatures up to 200°C
35.07070	ER-EH07	Length 700 mm	
35.07100	ER-EH10	Length 1000 mm	
35.07150	ER-EH15	Length 1500 mm	
35.07200	ER-EH20	Length 2000 mm	
35.07250	ER-EH25	Length 2500 mm	



35.07501	HTI-16	Temperature controller, 230VAC For ER-EHxx
----------	--------	---

In-Situ pre filter



35.00703	HD-03	Length 300 mm, Diameter 50 mm, up to 10 g/m ³	Pore size 3 µm, SS 1.4404, for temperatures up to 550°C
35.00705	HD-05	Length 500 mm Diameter 50 mm, up to 20 g/m ³	
35.00710	HD-10	Length 1000 mm, Diameter 50 mm, up to 15 g/m ³	
35.00803	HD-03V	With V-deflector, length 300 mm, Diameter 50 mm, up to 10 g/m ³	Pore size 3 µm, SS 1.4404, for temperatures up to 550°C
35.00805	HD-05V	With V-deflector, length 500 mm, Diameter 50 mm, up to 20 g/m ³	
35.00810	HD-10V	With V-deflector, length 1000 mm, Diameter 50 mm, up to 15 g/m ³	

Extension tube for pre filter



35.00910	HD-ET10	Extension tube for pre filter, length 1000 mm	Made of SS316 (1.4401)
35.00920	HD-ET20	Extension tube for pre filter, length 2000 mm	
35.00925	HD-ET25	Extension tube for pre filter, length 2500 mm	
35.00926	HD-ETK25	Extension tube for pre filter, length 2500 mm	Made of Kanthal
35.00950	HD-ETGK	Gasket for extension tube	

CONFIGURATION JES 301

Consumable parts



35.90010	O-Ring A, 200°C, Viton® (FKM)
35.90011	O-Ring B, 200°C, Viton® (FKM)
35.90012	O-Ring A, 315°C, Kalrez® (FFKM)
35.90013	O-Ring B, 315°C, Kalrez® (FFKM)
35.90014	Filter element SiC F10, 2 µm, 40/20 x 135mm, for normal use in flue gas applications
35.90018	Surface coated filter element, 0,2 µm, 40/20 x 135mm, for fine particulates (like flue gas from a cement kiln)
35.90015	Gasket for filter element, 200°C, Viton®
35.90016	Gasket for filter element, 315°C, Kalrez®
35.90100	Spare part kit, consisting of 1 x O-Ring A and B, 1 x filter element SiC F10, 2 x gaskets Viton®

Spare parts



35.90050	Heater element, 230VAC 50/60 Hz, 500 W
35.90052	Heater element, 115VAC 50/60 Hz, 500 W
35.90060	Thermocouple type K for PCB of JES 300
35.90065	Thermal insulation

CONFIGURATION JES 301

Further spare parts



35.90230	PCB temperature controller with housing, 230VAC/115VAC
35.90260	Temperature sensor PT100 for PCB of JES 301
35.94000	Conversion kit for JES 300 consisting of temperature sensor PT100 and PCB 230VAC/115VAC
35.90080	Male connector SS316, for 6 mm tube
35.90081	Male connector SS316, for 8 mm tube
35.90082	Plug, SS316
35.90083	Male connector, SS316, for 1/4" tube
35.90084	Male connector, SS316, for 3/8" tube
35.90085	Elbow connector, SS316, for 6 mm tube
35.90086	Male connector, SS316, for 10 mm tube
35.90087	Adapter for G3/8" connector SS316, for 10 mm tube
35.90088	Seal SS/FKM for G 3/8"

Specification subject to change without notice.

PDS_E_Configuration_JES 301_v1.3

JCT Analysentechnik GmbH

Werner Heisenberg-Straße 4 A-2700 Wiener Neustadt
 Tel. +43 (0) 2622 / 87201 Fax +43 (0) 2622 / 872011
 E-Mail: sales@jct.at Web: www.jct.at

