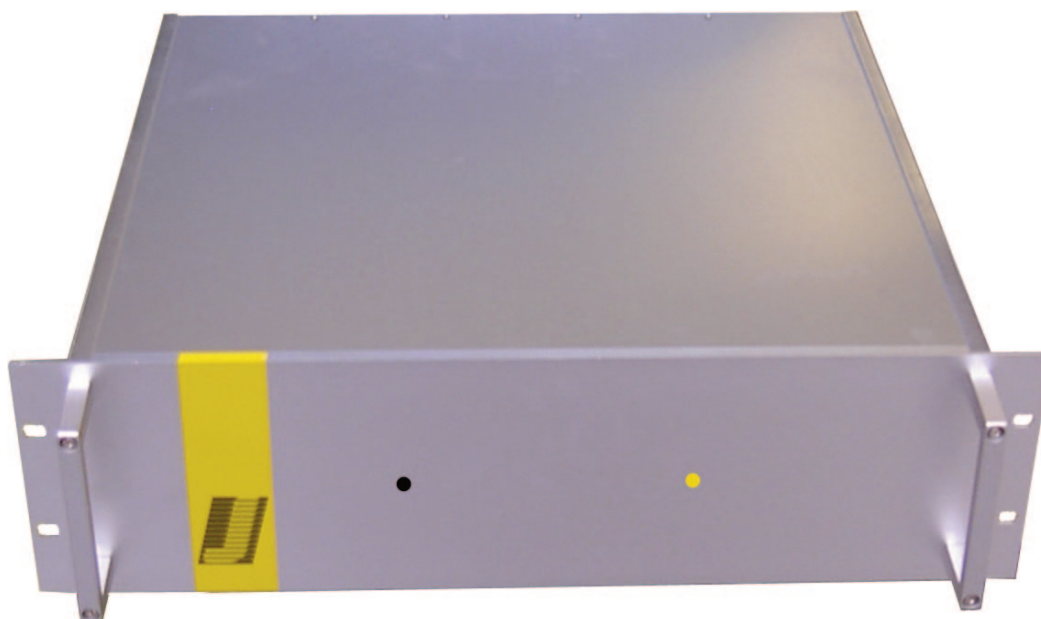




JCT
Analysentechnik

JMSU Heated Stream Selector



Gas Sampling
Probes

Heated Sample
Lines

Sample Gas
Coolers

Condensate
Treatment

Accessories

Gas Conditioning
Systems

Sample Gas
Converters

APPLICATION

- For extractive gas analysis
- For emission and process monitoring
- Stream selector up to 4 sample points to one analyzer
- For hot-wet gas analysis

BENEFITS

- No change in flow velocity/pressure due to tube-size bore hole through ball valves
- Maximum operational safety
- No damage of analyzer in case of failure
- No influence to sample gas
- No cold spots
- Low noise operation also in case of switching
- Low and easy maintenance
- Easy mounting and integration in gas analysis systems

FEATURES

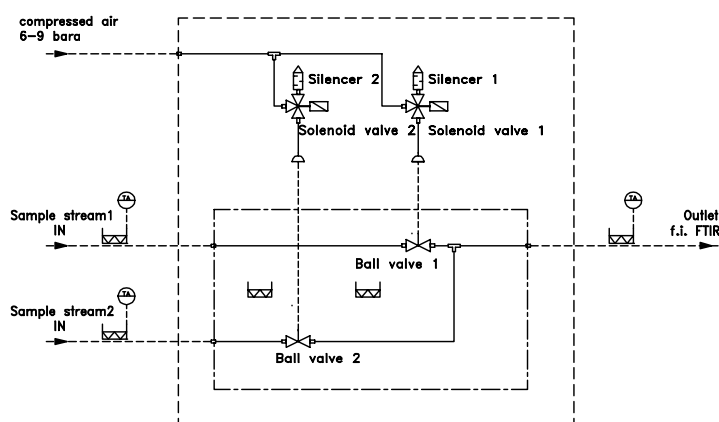
- For 2 to 4 measuring points
- 19" -rack mounting, 3 HU or 4 HU
- Consistent heating
- Operating temperature up to 220 °C
- Low and high temperature status contact
- „Fail safe“ condition in case of power failure
- Power supply 115 or 230 VAC 50/60 Hz
- Stainless steel ball valves with full bore size for switching over the measuring points
- Pneumatic actuated ball valves
- Optical shift position indicator

TECHNICAL DATA

Model	JMSU-2	JMSU-3	JMSU-4
Description	heated stream selector		
Number of sample points / Housing	2 / 19" 3 HU	3 / 19" 4 HU	4 / 19" 4 HU
Operation			
Operating temperature	up to 220 °C		
Ambient temperature	5°...45 °C		
Operating pressure	max. 7 bara		
Heating-up time	approx. 30 min		
Construction			
Dimensions over all (W x H x D)	3 HU: 483 x 134 x 410 mm, 4 HU: 483 x 178 x 410 mm		
Weight	approx. 8 kg		
Sample gas connections inlet / outlet	8 mm pipe (rear side)		
Connection instrument air	6 mm „push in“ (rear side)		
Sample gas wetted materials	SS316, PTFE		
Protection class	IP20 (EN60529)		
Housing / Colour	aluminum, natural		
Approvals / Signs	CE		
Electrics			
Power supply	230 VAC or 115 VAC 50/60 Hz		
Power consumption	320 VA (2 sample streams) to 640 VA (4 sample streams)		
Sensor for external temperature controller	2 wire Pt100 RTD, IEC 751		
Electrical connection	spring type terminals, clamping range 0.08 to 2.5 mm ²		

GAS FLOW DIAGRAMM

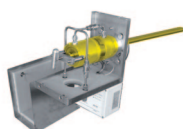
JMSU-2



ORDER CODES

Bestellcode	Beschreibung	Bestellcode	Beschreibung
79.00105	JMSU-2 for 2 sample streams, 3 HU, 115 VAC 50/60 Hz	79.00100	JMSU-2 for 2 sample streams, 3 HU, 230 VAC 50/60 Hz
79.00106	JMSU-2 for 3 sample streams, 4 HU, 115 VAC 50/60 Hz	79.00101	JMSU-2 for 3 sample streams, 4 HU, 230 VAC 50/60 Hz
79.00107	JMSU-2 for 4 sample streams, 4 HU, 115 VAC 50/60 Hz	79.00102	JMSU-2 for 4 sample streams, 4 HU, 230 VAC 50/60 Hz

Gas Sampling **Probes**



Heated Sample **Lines**



Sample Gas **Coolers**



Gas Conditioning **Systems**



NOx **Converter**



and **solutions** for

